

## Saugatuck-Douglas District Library

**Millage at a Glance****We Listened.**

Following the failed 2014 proposal, a survey was mailed to every district resident. Over 63% were in favor of a new building, although many felt the initial proposal was too large and too expensive. Follow-up surveys and focus groups confirmed the need for a new facility, and prioritized barrier-free accessibility and more space for books and programs.

The new library building has been designed to achieve the goals presented by the community and has the capacity to evolve as technology and community needs change.

The new building would be located on the vacant lot on the north side of Center Street in Douglas, which was purchased by the Library in 2014.

**Why Do We Need a New Building?**

- Too many stairs and an unreliable, uncomfortably small elevator
- Not enough space for books and DVDs
- Only one bathroom
- Flooding in the Children's Room
- Lack of quiet areas
- No designated space for library programs or staff work areas
- Inefficient HVAC
- Maxed out electrical capacity

**We Reduced the Cost**

2014	2018
\$5.1 million	\$4.35 million
.67 mills	.4271 mills for 25 years

**We Reduced the Size**

2014	2018
12,500 sq. ft.	9,000 sq. ft.

**We Listened to Your Priorities**

- Space for 25% more books and DVDs
- Single story, ADA compliant
- Multi-functional space for library programs and community use
- Quiet reading areas
- Multiple restrooms
- Small group meeting room
- Modern infrastructure
- Convertible outdoor patio

## How much will it cost?

- If the recommended bond issue is approved by voters, it would raise \$4,350,000 to construct a new library.
- .4271 mills per \$1,000 of taxable value
- Cost per household depends on the taxable value of your property. See table below.

Market Value	Taxable Value	Cost/Year	Cost /Month
\$150,000	\$75,000	\$32.03	\$2.67
\$200,000	\$100,000	\$42.71	\$3.56
\$300,000	\$150,000	\$64.07	\$5.34
\$400,000	\$200,000	\$85.42	\$7.12
\$500,000	\$250,000	\$106.78	\$8.90

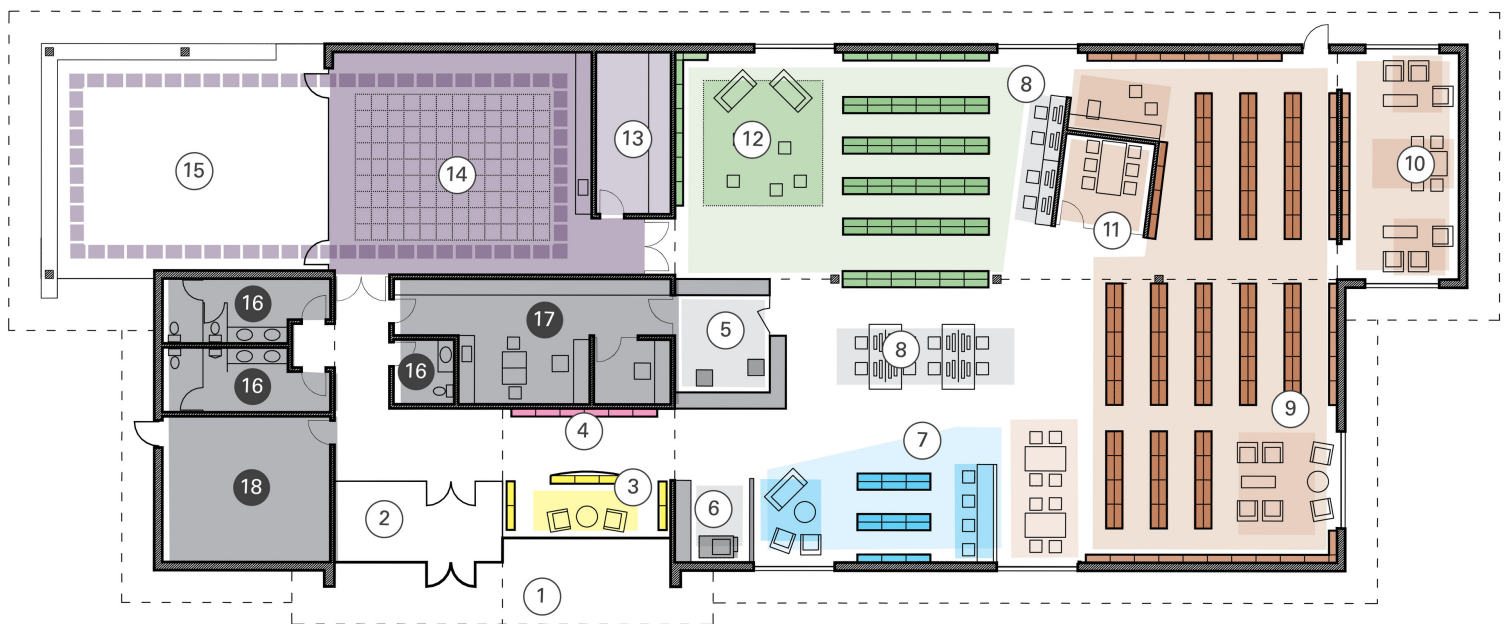
## How will I benefit?

The new library will be a place for everyone.

- Seniors and those with mobility issues (wheelchairs, strollers and walkers) will have easy access to the building and the materials
- Working professionals and small business owners will have quiet work areas as well as access to a small meeting room
- Students will have designated spaces for collaborative learning and socializing
- Children will have more space to play and learn

**Proposed Building: 9,000 sq. ft.**

**Current Facility: 4,500 sq. ft.**



- |                              |                                |                                 |
|------------------------------|--------------------------------|---------------------------------|
| 1 covered entry              | 7 young adult                  | 13 program storage              |
| 2 vestibule                  | 8 computers                    | 14 program room                 |
| 3 friends bookstore shelving | 9 adult collection / seating   | 15 covered outdoor programs     |
| 4 new materials browsing     | 10 quiet reading / periodicals | 16 restrooms                    |
| 5 service desk               | 11 study room                  | 17 staff area                   |
| 6 copy center                | 12 youth collection / seating  | 18 mechanical / electrical / IT |

## Vote on August 7, 2018

For the Strategic Plan and FAQs, visit:  
[www.sdlibrary.org](http://www.sdlibrary.org)

## Contact

Ingrid Boyer, Library Director  
[stdib@llcoop.org](mailto:stdib@llcoop.org)  
 (269)857-8241